

Lifestyle...Healthcare

*Living...
Comfortably South of Atlanta*

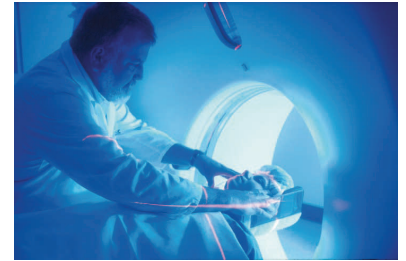
Henry County residents and visitors enjoy some of the finest healthcare services in the Atlanta region courtesy of Henry Medical Center, a full-service 215-bed not-for-profit community hospital that is fully accredited by the Joint Commission on Accreditation of Healthcare Organizations. With more than 400 doctors on staff, a variety of medical specialties are readily available.



Henry Medical Center has completed a major expansion that added an additional 91 beds, increasing our inpatient bed total to 215, and will greatly expand the specialized level of service offered to the community. The North Tower features expanded Women and Children Services, expanded Critical Care Services, comprehensive Cardiology Service and expansion of Emergency Service. In addition, the

ground floor features food service and hospitality amenities.

Henry Medical Center offers complete diagnostic care including nuclear medicine, mammography, x-ray, bone density scanning, upper gastrointestinal series, ultrasound, MRI and CT scanning. Our qualified surgeons perform sophisticated surgical procedures that utilize today's newest evolving technology. Henry Medical Center also has an Ambulatory (one-day) Surgery Center on site for those procedures not requiring an extended stay.



Henry Medical Center believes that having a baby is one of the most personal - and most memorable - times in a woman's life and the facility offers a world of choices when it comes to labor and delivery. Henry Medical Center's birthing suites are decorated and furnished with modern equipment for the comfort of both the patient and the newborn infant, and the Neonatal Intensive Care Unit (NICU) for infants with special needs is staffed by a board-certified neonatologist, highly skilled nurses with intensive training in the care of premature and acutely ill newborns, and respiratory therapists.

In addition to its main facility located in Stockbridge, Georgia, Henry Medical Center operates the McDonough Medical Pavilion, which houses Minor Emergency Care, Henry Occupational Medicine, LLC, and the McDonough Diagnostic Center. Laurel Park at Henry Medical Center is a skilled nursing and rehabilitation facility with one purpose: to give the finest care possible in a comfortable, compassionate environment.